

Finding meaning has been a  
universal quest since  
the beginning of time.

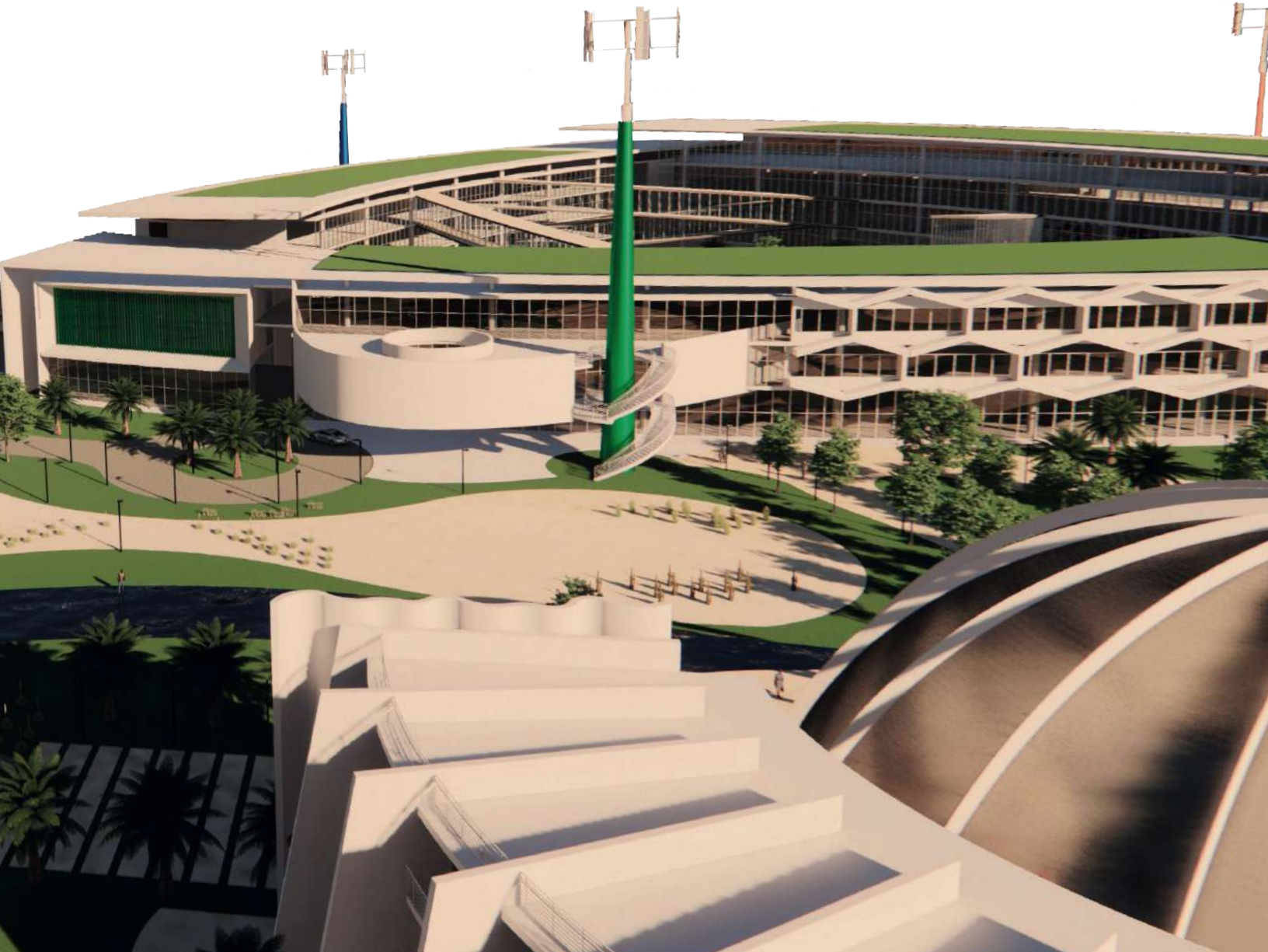
---

# Jewish National Fund World Zionist Village

---

## THE QUEST

*A Journey through the Bible and the Rebirth of a Jewish State  
Connecting the next generation to the land and people of Israel.*

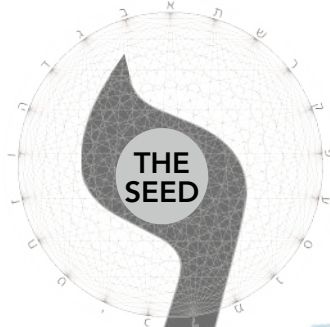


# BETWEEN PRINCIPLE AND FORM

"Judaism is expressed in a System of Mystical Symbols that reflect the mystery of God and the Universe.  
It is through shape and form that the existence of these principles can be revealed"

---

ABRAM



אברם העברי

לך לך



A LIGHT UNTO THE NATIONS

אור לגוים

# THE QUEST

From divine commandment to beacon of light across scriptures, rivers, generations...

---

## THE QUEST ACROSS THE SCRIPTURES

ACROSS THE LAND • LECH LECHA • LECH ZIONA

*"Go from your land, from your birthplace and from your father's house, to the land which I will show you".*  
(Genesis 12:3)

God told Abraham to leave his comfort zone. After the Holocaust the Jews were forced to leave their "comfort zone," their homes, their communities, their jobs.

When Abraham and his descendants, the Jewish refugees journeyed to Canaan/Israel, they arrived in a land of endless sand dunes and barren limestone hills.

### BE'ER SHEVA: BIBLICAL BEGINNING AND MODERN-DAY TIPPING POINT

- **The travels of Abraham as an example to stretch beyond what is known, in search of a holier existence.**

Abraham came to the Negev desert, an empty canvas, where unlimited possibilities existed. He was motivated by his faith and desire to build. Beer-Sheva became the center of this expansion.

- **The challenge to materialize a spiritual calling and honor movement as a creation tool.**

The Zionist story of building the country of Israel from the barren desert.

- **Just like Abraham dug water in a desert, the Zionist Center should become an ever-flowing fountain of knowledge and growth.**

God sealed His Covenant with Abraham and his descendants. At this point in time, The Holy Land was bequeathed to them by God as their eternal homeland. Abraham sought to raise a nation with new principles of unity and love. He dug wells in the middle of the desert searching for precious water and founded the city of Beer Sheva. Yet, the exile and persecution of the Children of Israel is foretold. Then, his descendants, the Jewish refugees sought to rebuild their homeland. They also settled in the heart of the Negev, bringing with them the will to survive and a bottomless well of creative energy, unity and love. Later, they would offer this creative and innovative technology to the world.

## THE QUEST ACROSS THE RIVER

*"I took your father Abraham from beyond the River and led him through the whole land of Canaan and multiply his seed..."*  
(Joshua 24:3)

- **Just like Abraham, we honor the site by giving meaning and context to the natural landscape.**
- **The many symbols of the project:**

The Dome – Ohel Abraham  
The Village - The atom as a unity of creation and movement.

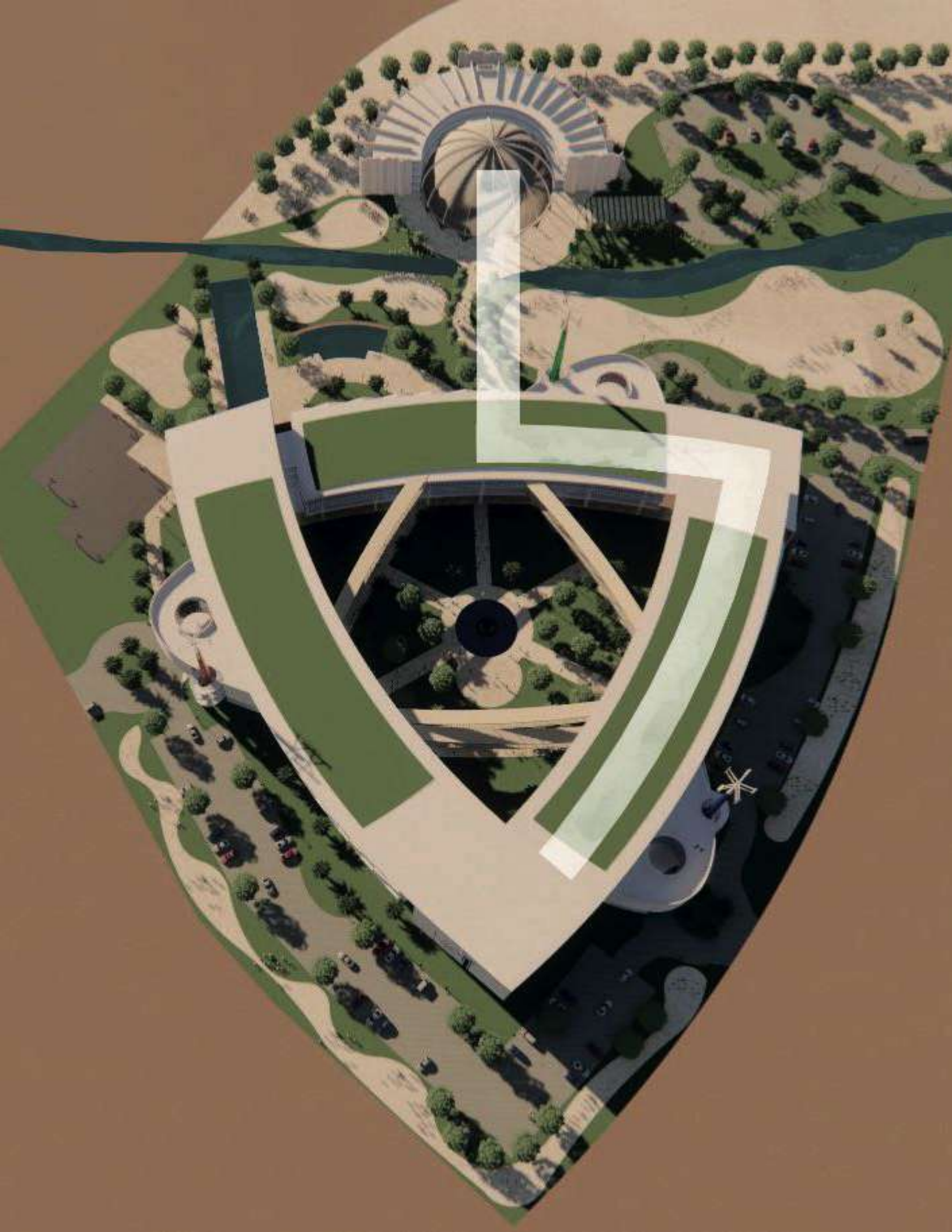
## THE QUEST ACROSS GENERATIONS

*"It is in the Negev that the people of Israel will be tested..."*  
(David Ben Gurion, 1955)

- **Zionism as a tool to spread roots through generations**  
Zionism's goal is the restoration of Jewish sovereignty and culture in their historic homeland.
- **By blending technology and innovation with tradition a bridge is formed and knowledge is expanded across generations.**

- **The need to constantly innovate to attract younger generations**  
"It is in the Negev that the youth will be tested – its pioneer strength, vigor of spirit, and creative and conquering initiative".

Inspired in David Ben-Gurion (1955) The Significance of the Negev

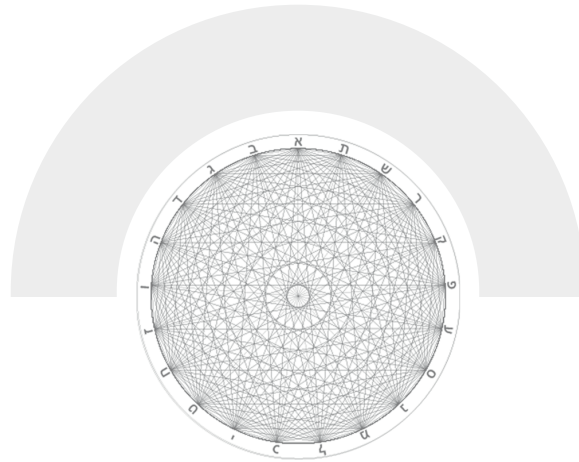




# THE DOME - OHEL ABRAHAM

"I will surely bless you, and I will multiply your descendants like the stars in the sky and the sand on the seashore"  
Genesis 22:17

והרבה ארבה את-זרעך ככוכבי השמים וכחול אשר על-שפת הים



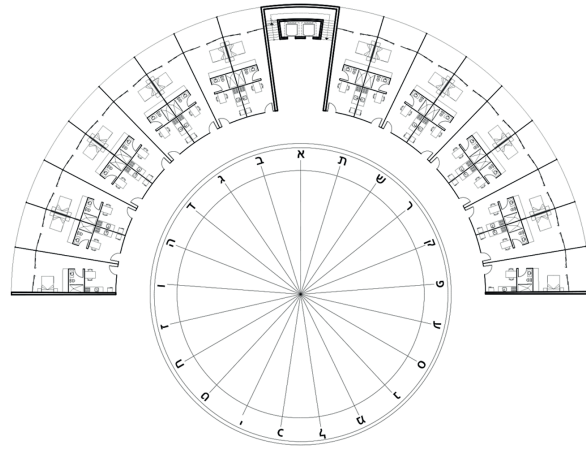
The visitors' quest starts through the dome.  
Designed as a light-filtering sieve with desert sand floor, this welcoming space  
will host exhibitions that narrate the history of the Jewish people.  
At the center of the space, a well is proposed as a testament of Beersheva's place in history,  
representing both a Biblical beginning and modern-day tipping point.



# THE GUEST HOUSE

Hospitality was always offered in their house  
Genesis 18:1-15

ויאמר מהרי שלש סאים קמח סלת לوشي ועשי עגות



Visitors enter the Guest House through the Dome, emblematic of Abraham's tent where all were welcomed.

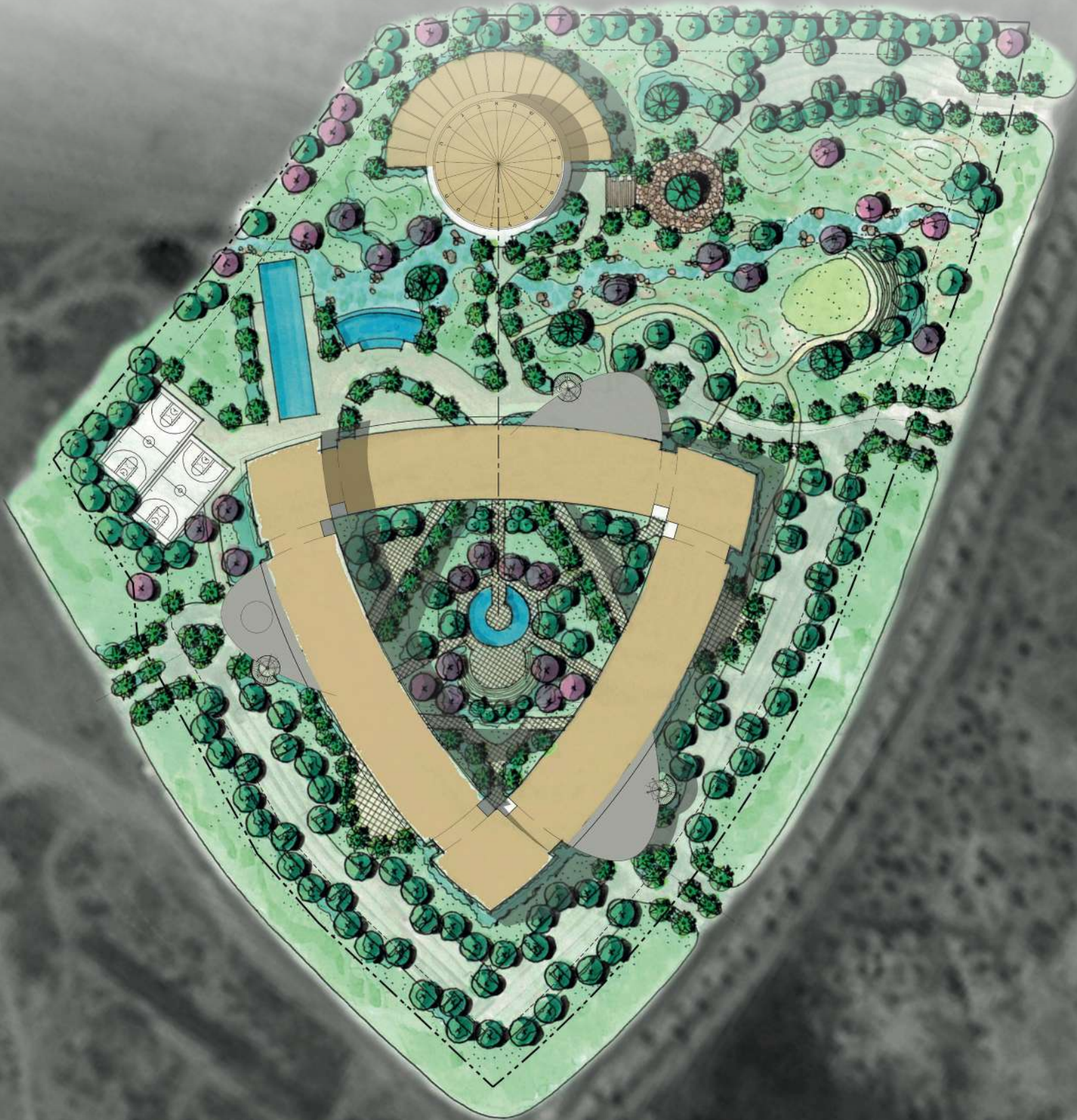
The 72 Guest House apartment balconies overlook Beersheva's River Park, connecting the new project to the Negev's capital new ecological park.  
All of the Guest's House supporting services will be located right by it: common and leisure.



# SITE PLAN

We honor the site by giving meaning to the natural landscape and context.

And he planted an Eishel in Beer-Sheba, and he called there in the name of the Lord, the God of the world.  
Genesis 21:33





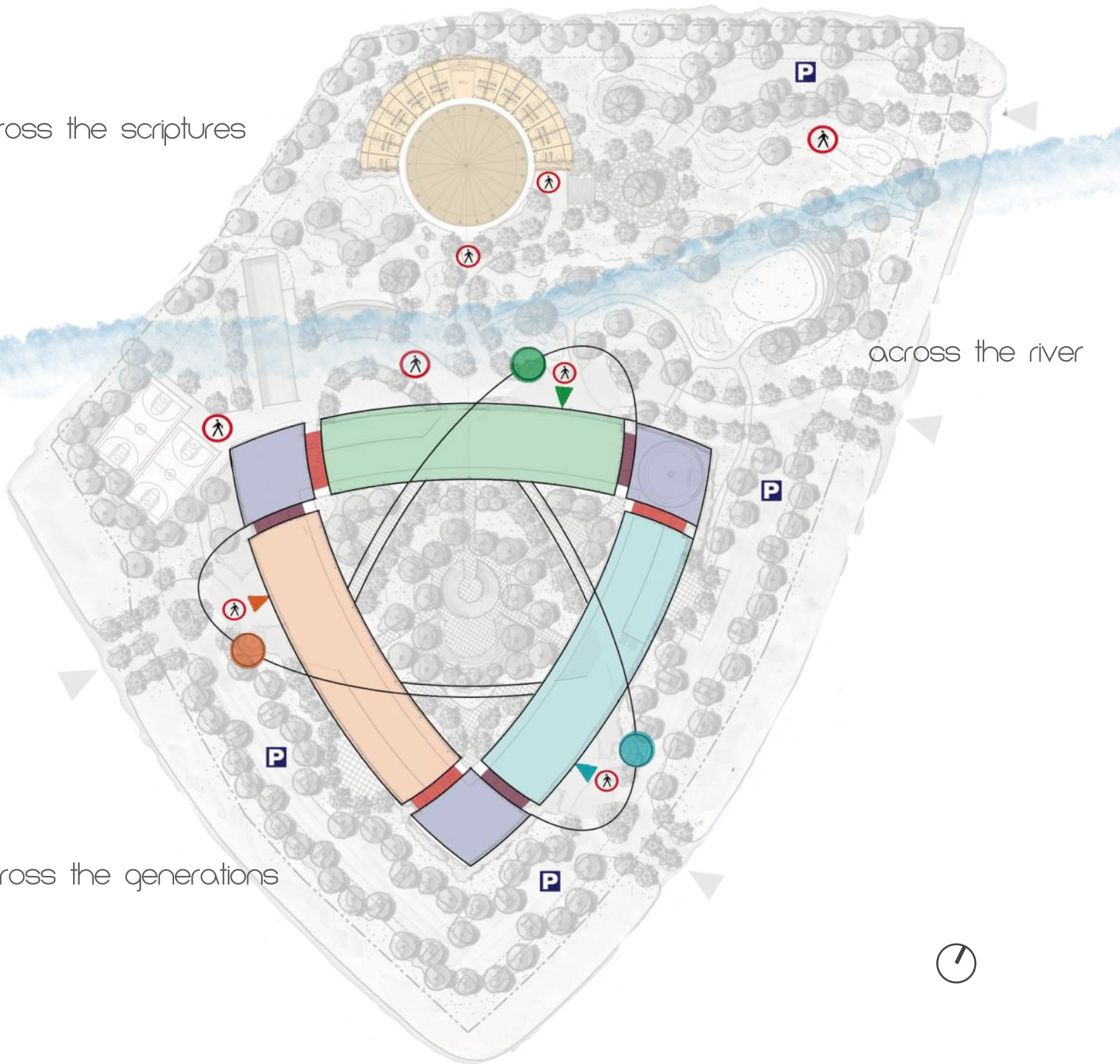
# THE FORM

The architectural proposal serves as a catalyst for community building, where the malleability of spaces actually promotes encounter between the different programs.

across the scriptures

across the river

across the generations



- The Dome - Ohel Abraham
- The Guest House
- Zionist Adult Education Center
- Alexander Muss High School and Dormitories
- Alexander Muss High School and Dormitories / Innovation Center

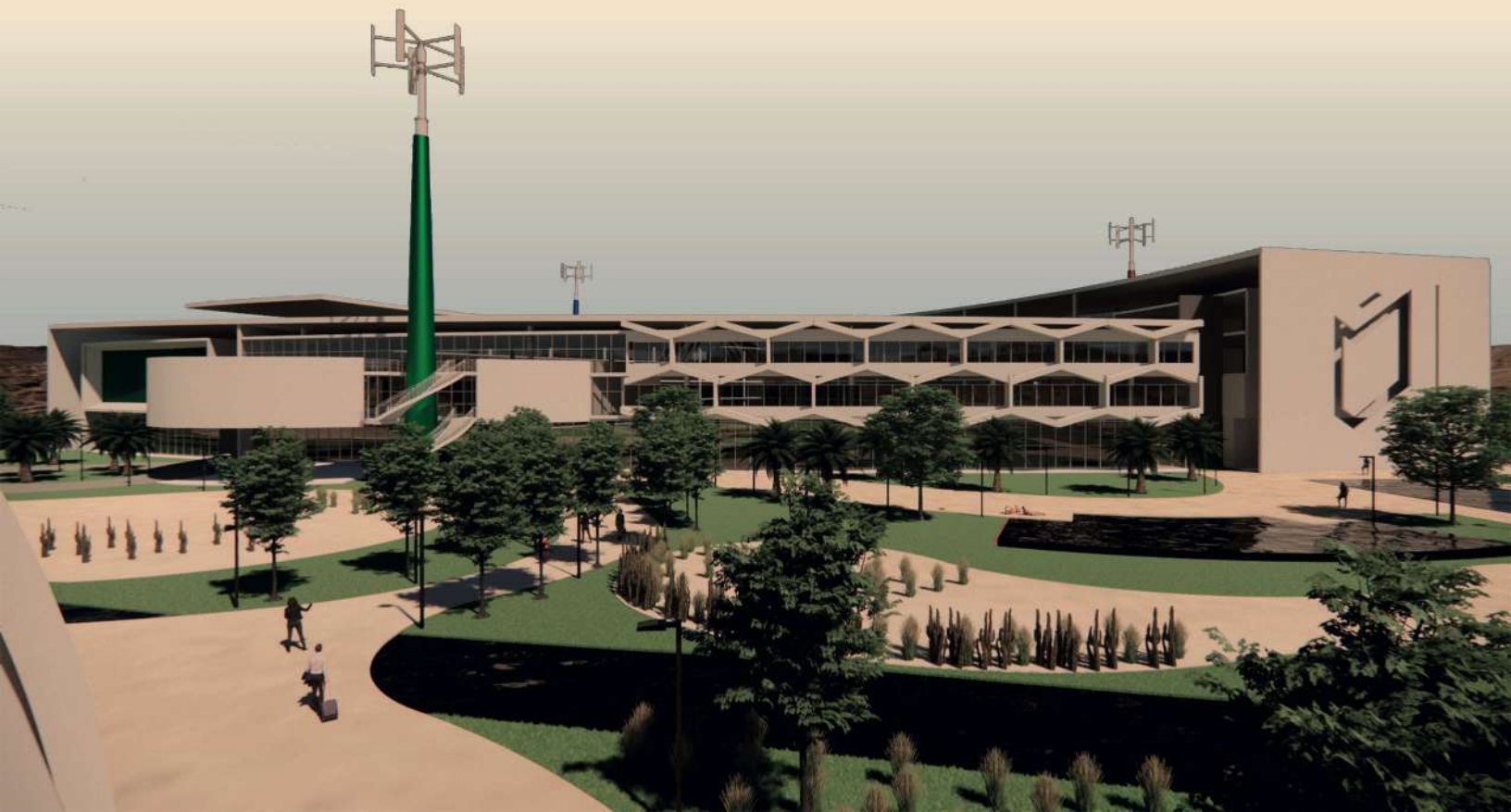
- Service Area
- Stairs and Elevators
- Multi-Purpose Rooms
- Vehicle Entrance to the Complex



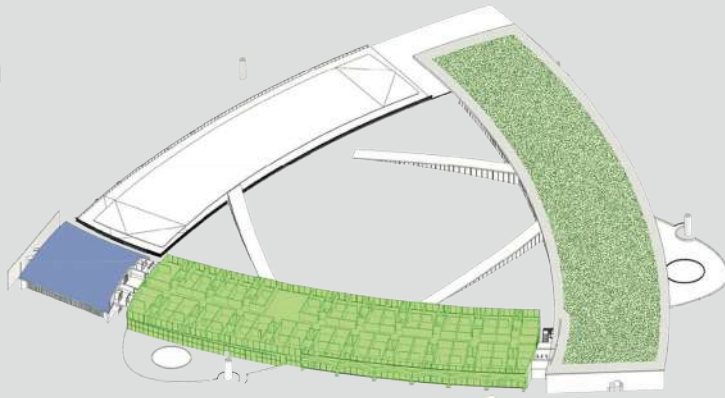
## THE RIVER

---

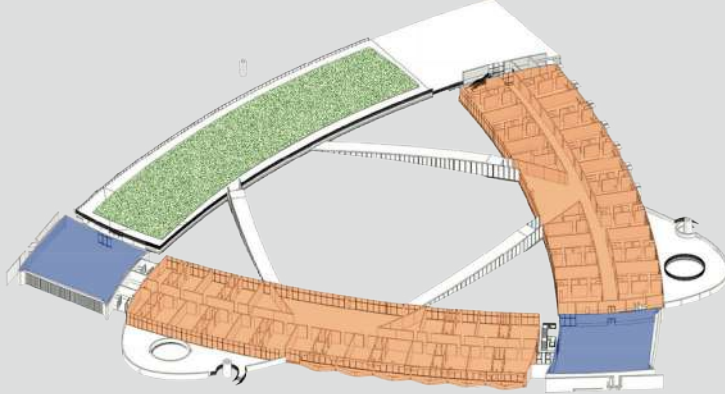
The site is naturally divided by a river that defines a northern section dedicated to messages from the scriptures and a southern section dedicated to future generations.



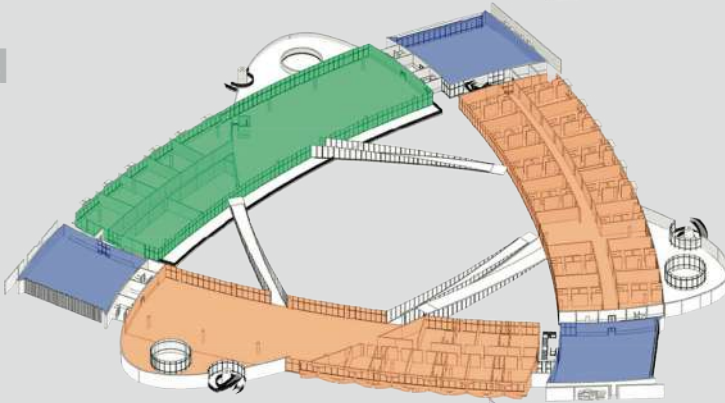
Fourth Floor



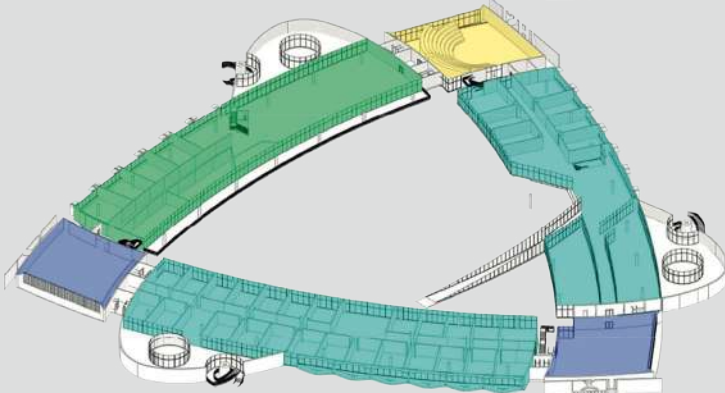
Third Floor



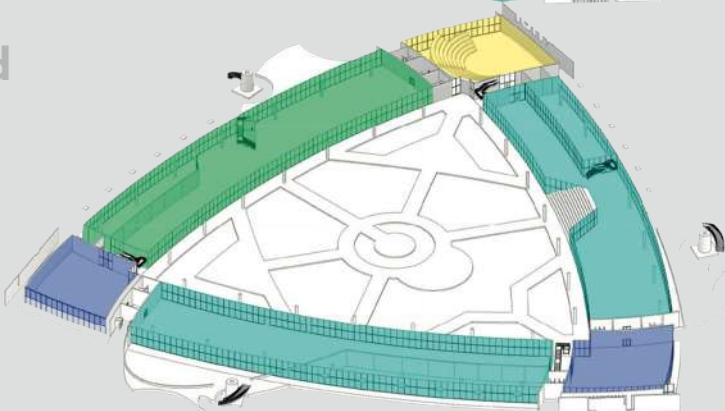
Second Floor



First Floor



Ground Floor

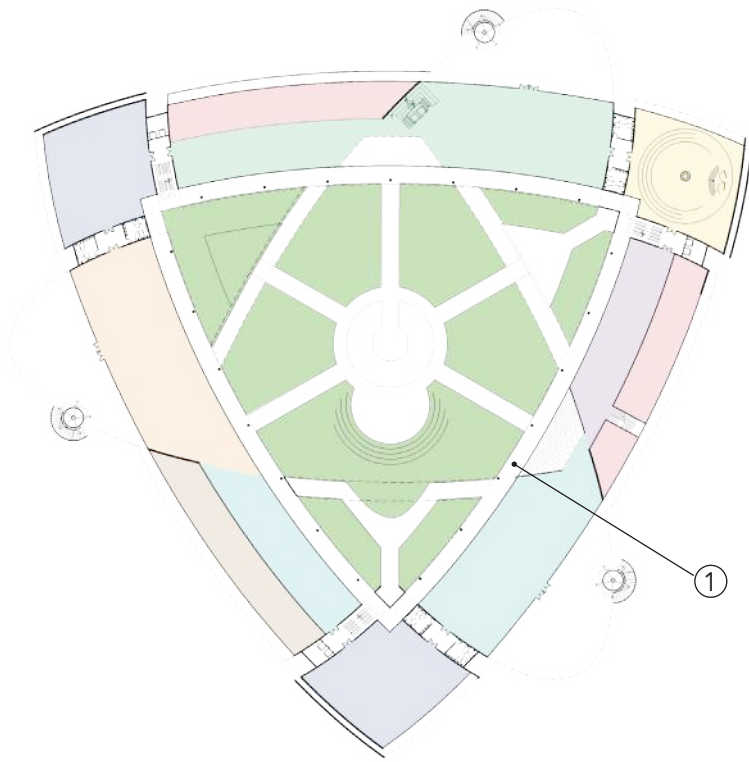


- Zionist Education Center
- Alexander Muss High School
- Alexander Muss High School / Dormitories
- Innovation center
- Multipurpose
- Synagogue
- Green Terrace



# THE GROUND FLOOR

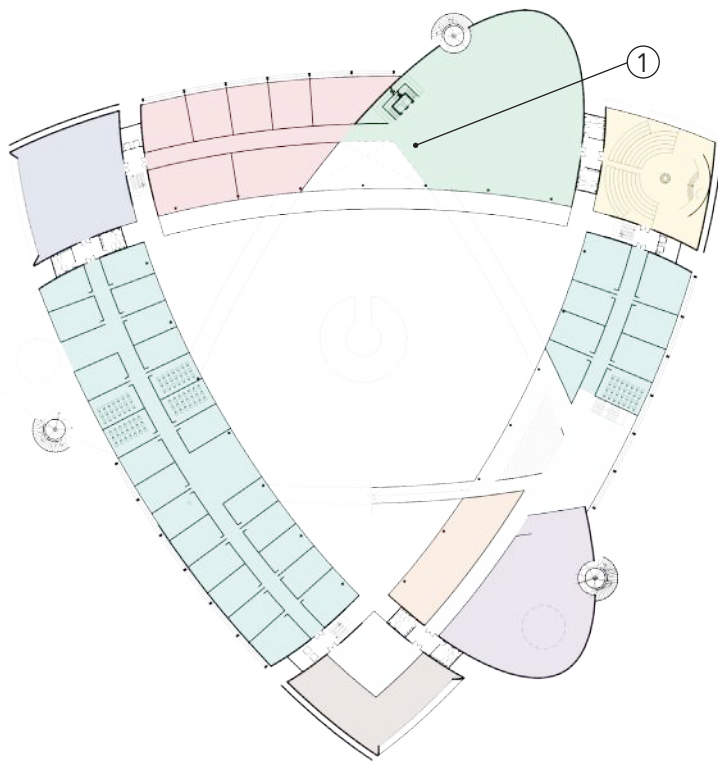
The building takes advantage of both the central courtyard, and exterior spaces meant to support the different programs.



- Zionist Adult Education Center Main Entrance - Lobby
- Offices
- Multipurpose
- Synagogue
- Village Cafeteria / Gym
- Kitchen / Services
- School Cafeteria
- AMHSI Main Entrance - Lobby
- Lounges



# THE FIRST FLOOR



## Zionist Adult Education Center

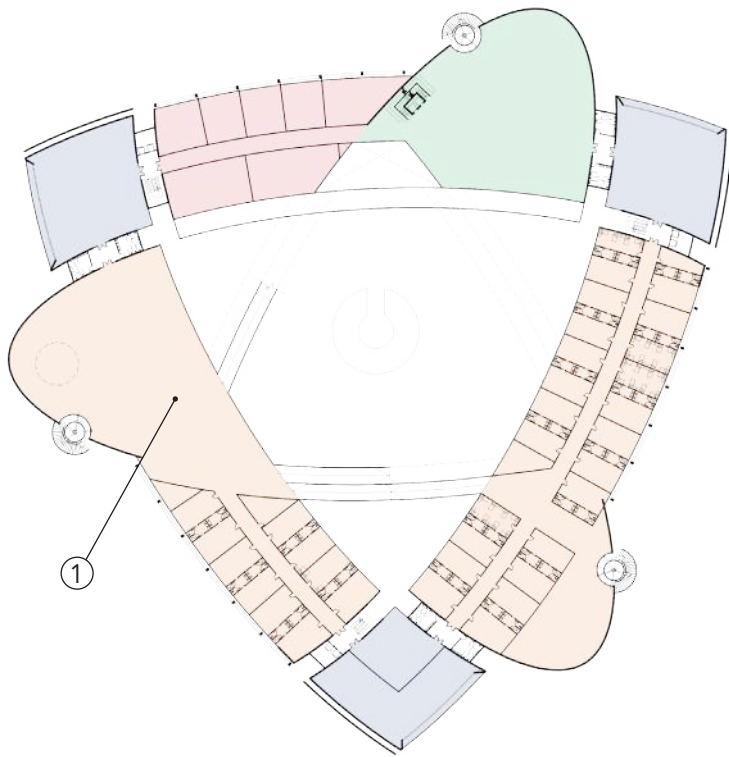
- Green: Lounges and individual learners
- Red: Group seminars
- Blue: Multipurpose area
- Yellow: Synagogue

## Alexander Muss High School International

- Orange: Science Labs
- Brown: Faculty workrooms
- Light Blue: Lounges
- Cyan: Classrooms
- Purple: Library and quiet work spaces



# THE SECOND FLOOR

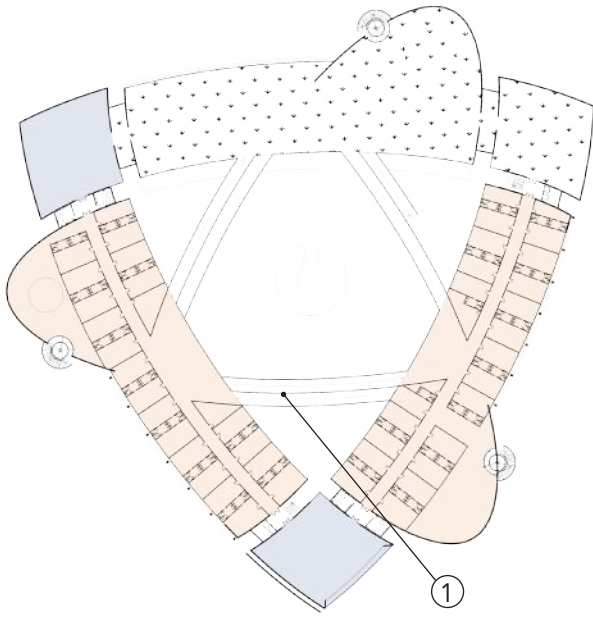


- Lounges and individual learners
- Group seminars
- Multipurpose
- AHMSI Dormitories and Lounges



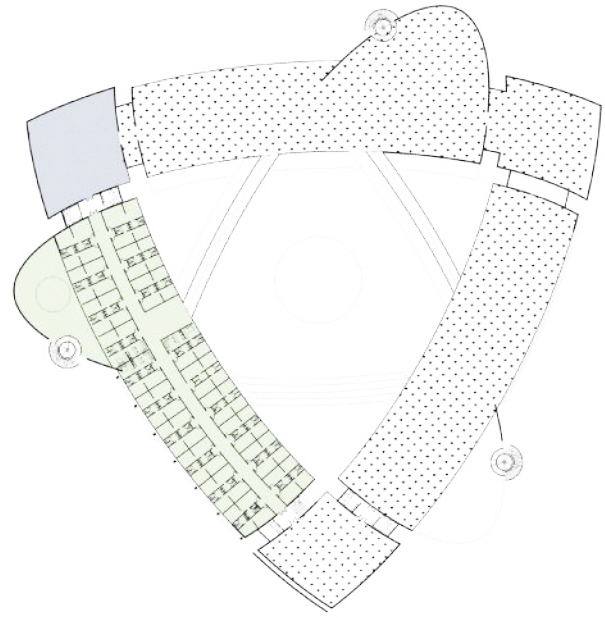
# THE THIRD AND FOURTH FLOOR

Third Floor



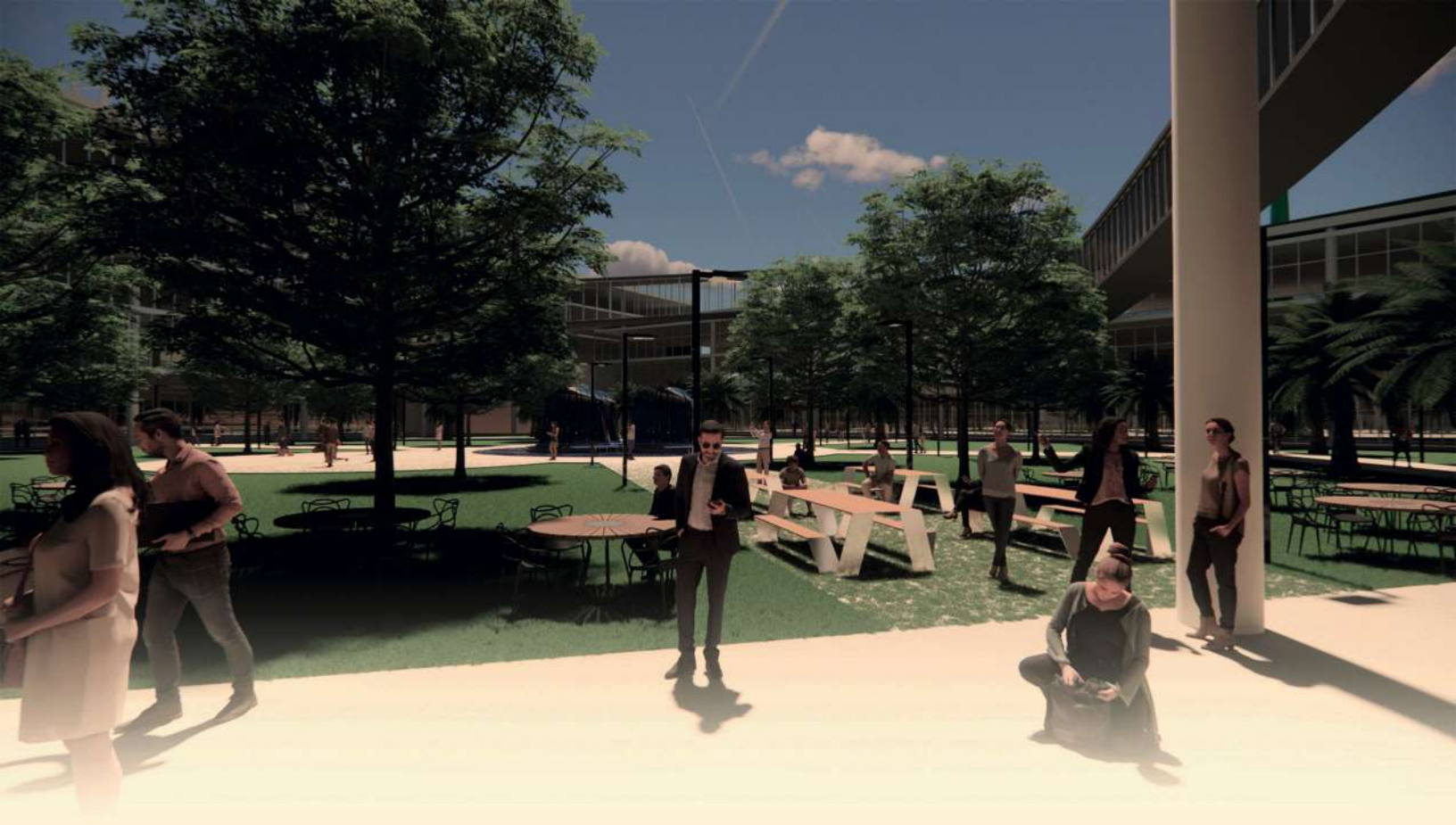
- Multipurpose
- AHMSI Dormitories and Lounges

Fourth Floor



- Multipurpose
- Innovation Center





## THE COURTYARD

---

The courtyard is the quintessential space of communal gathering. A vertical water feature symbolizes an endless source of light to be shared with other nations. Bridges connect spaces from different sections of the building, reinforcing the notion of constant connection and movement.

A Sunken Garden and a small amphitheater enrich the space and topography.

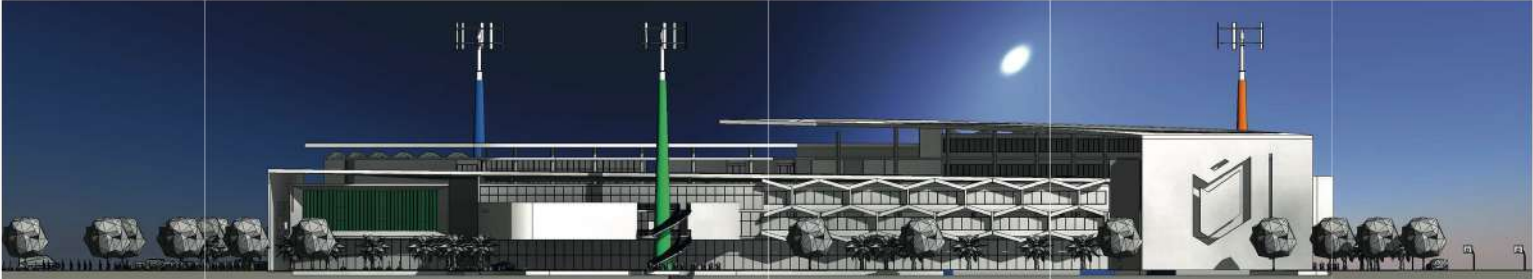




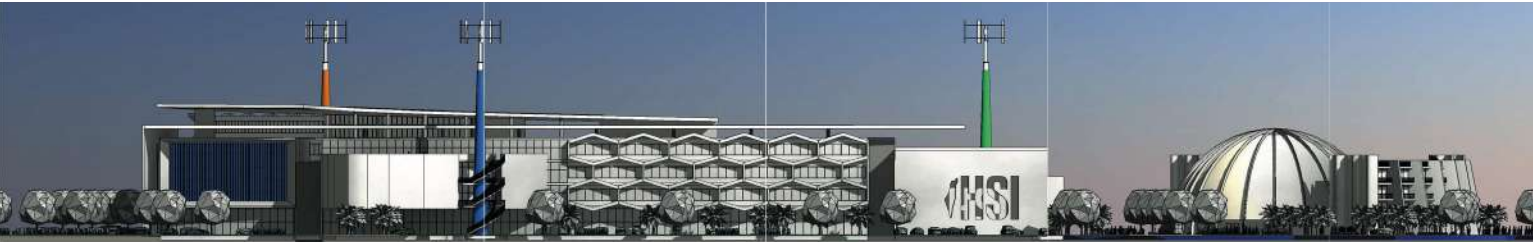
# THE ELEVATIONS

Natural ventilation, daylight, quality views, privacy and good thermal performance.

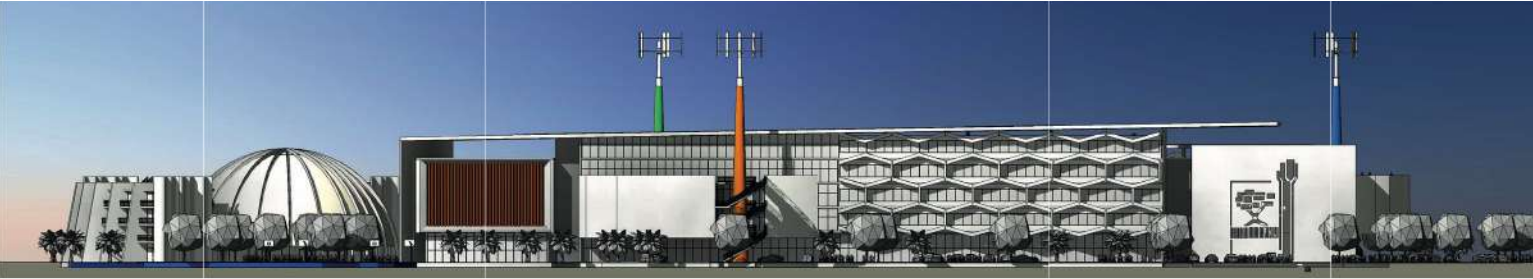
---



**North Elevation**



**East Elevation**



**West Elevation**

# SUSTAINABILITY

"It is in the Negev that the creativity and pioneer vigor of Israel will be tested, and this will be a crucial test."  
David Ben Gurion "The Significance of the Negev." 1955

## Low Energy and Water Certified Products:

Internal fixtures and equipment such as HVAC, lighting, and plumbing elements should be certified to achieve great performance as well as resources and cost savings.

## On Site Electricity Production:

three towers as well as south facing roof will be comprised of solar panels, strengthening the overall resilience of the building and taking advantage of the local natural and clean resources.

## Sloped Multifunctional Roof:

the design considers an inclined roof that directs stormwater for its storage and reuse, and has white spaces with a high SRI and green native vegetated spaces, mitigating the heat island effect and internal solar heat gains, as well as allowing for the regeneration of native biodiversity.

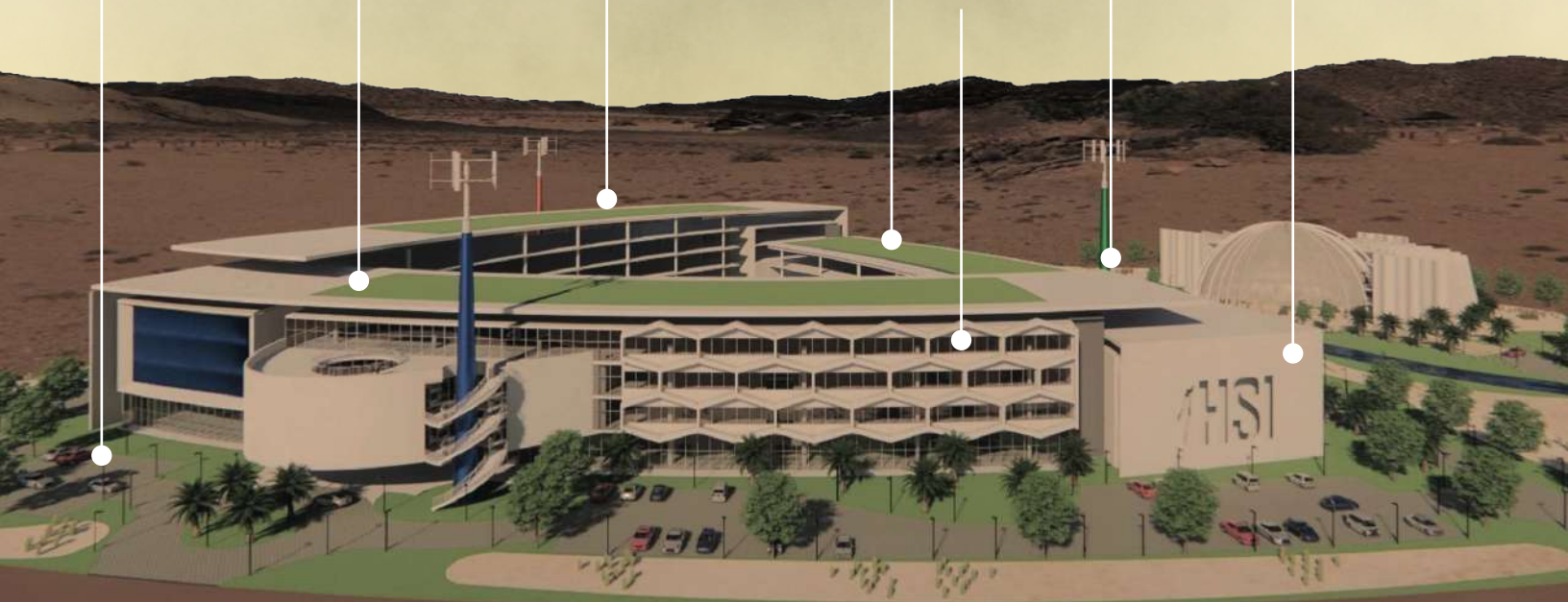
**Distribution:** courtyard form allows the placement of a central space for reunion surrounded by productive spaces with interior and exterior views, daylighting, and natural ventilation.

**Massive Structure:** by having a high thermal mass, the concrete structure reduces typical day-to-night temperature swings of the regional climate rendering energy and cost savings as well as a comfortable indoor space.

**Compactness:** small surface-area-to-volume ratio allows for minimizing heat transfer and maximizing gathering space.

**Fenestration, Rhythm, Modularity, and Window-to-Wall Ratio (WWR):** a shaded low-e double pain curtain wall system offers low maintenance, ease for repair, quick installation, and a special rhythm on its aesthetically pleasing modern façade. Moreover, its WWR allows it to effectively modulate between glare, water, vapor, and drafts penetration, while allowing for natural ventilation, daylight, quality views, privacy, and good thermal performance strategies.

**Open Spaces:** extensive landscape spaces comprised of native vegetation as well as permeable surfaces allow for reduced irrigation strategies, cooling the site, a space for recreation, as well as creating high-quality views.



# THE SOLAR POWER TOWERS

Taking advantage of the local natural and clean resources.

---



Zionist Education Center



Innovation Center



Alexander Muss HSI

*"It is in the Negev that the creativity and pioneer vigor of Israel will be tested, and this will be a crucial test. Israel's capacity for science and research will be tested in the Negev and it is incumbent upon our scientists and researchers to focus on new areas of research which residents of the North will have need of: research to desalinate seawater with inexpensive processes; to exploit solar energy which is so abundant in our country, and especially in the Negev; to use wind power to generate electric power; to prevent the wastage of scarce rain water which flows unused to the Mediterranean or to the Dead Sea; to build ponds across the length and breadth of the Negev for collecting precious rain water, to investigate the vegetation found in the Negev, despite its aridity... it is incumbent upon Israel's scientists to reveal the secrets of nature that are unique to our land...."*

**David Ben-Gurion "The Significance of the Negev", 1955**

# Jewish National Fund **World Zionist Village**

**THE QUEST**

**VISIT OUR PROJECT**

<https://api2.enscape3d.com/v1/view/5733d8e3-bacf-4643-bbf0-79641519c514>

